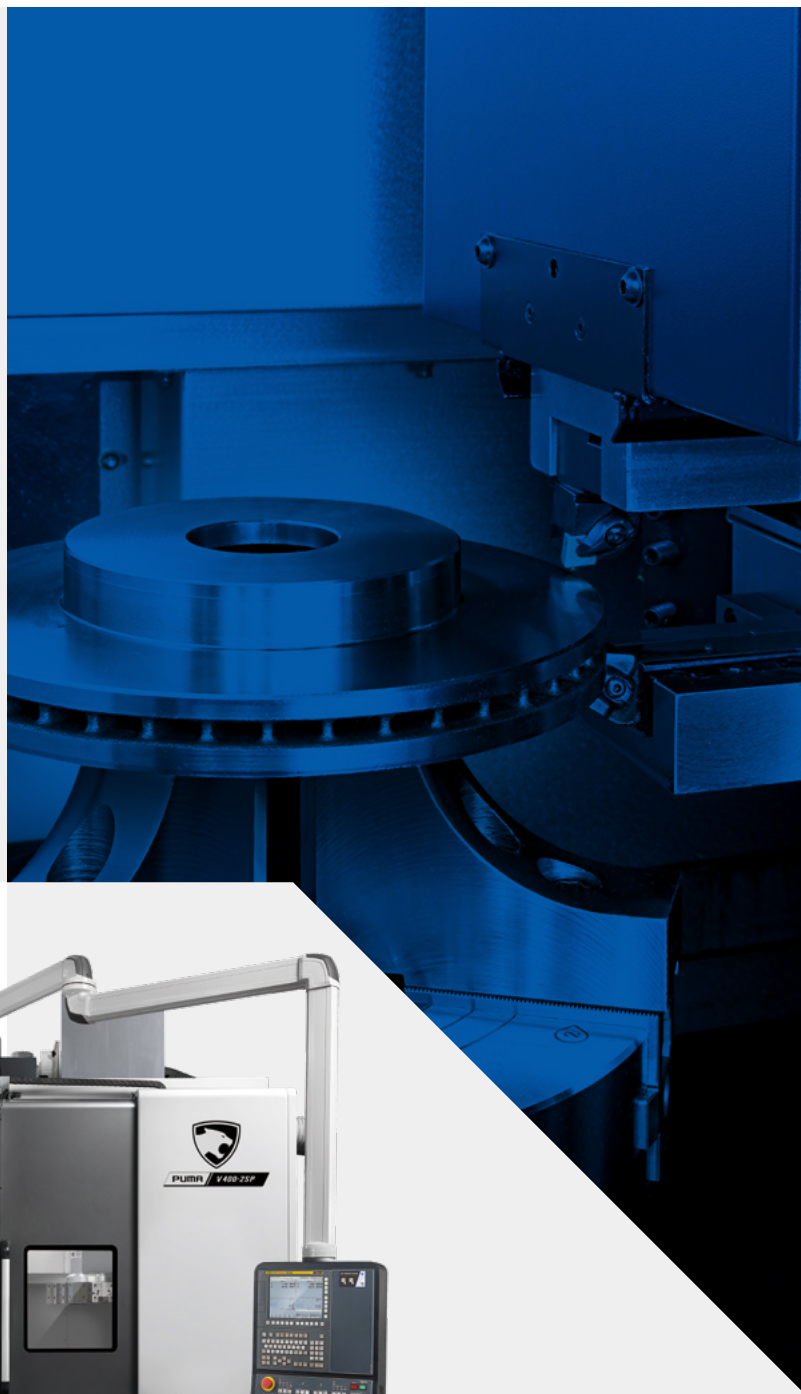


HIGH PERFORMANCE VERTICAL TURNING CENTER

PUMA V400

PUMA V400/L/R/ML/MR/PL/PR



PUMA V400

The compact vertical turning center has a small footprint and is ideal for heavy-duty machining operations and for achieving long term accuracies. Its powerful spindle drives, meehanite casting and integral box guideway construction provide unsurpassed stability and rigidity.

CONTENTS

Product Overview

Basic Information

- 04 Basic Structure
- 04 Machining Area
- 05 Spindle
- 05 Turret

Detailed Information

- 06 Standard / Optional Specifications
- 07 Fanuc i Plus
- 08 Siemens S828D
- 09 Power | Torque
- 10 External Dimensions
- 11 Tooling System
- 12 Tool Interface
- 13 Working Range
- 14 Machine Specifications

Customer Support Service

- 15 Customer Support and Services
- 15 Global Network



**ENHANCED
TURNING CAPACITY**



These machines have exceptional machining capabilities and are able to deliver the optimum in productivity for customers.

HIGH RELIABILITY



To facilitate heavy duty machining and optimize chip flow, the machine's base has been streamlined.

USER FRIENDLY DESIGN



The bed structure has been redesigned to enable high chip volumes to be disposed of - quickly and efficiently. For operator comfort and convenience the height of the operation panel can be adjusted.



BASIC STRUCTURE

The machine's integral box guideway bed design ensures vibration-free performance and facilitates heavy duty and high precision cutting.

Robust bed construction

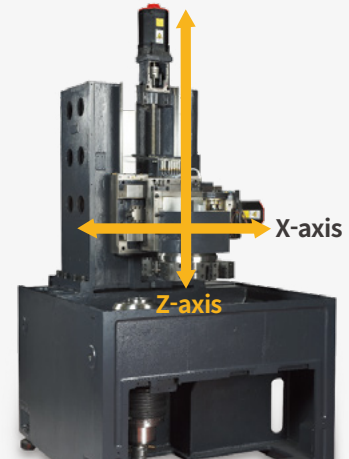
A Meehanite cast iron bed and integral box guideways provide the rigid foundation needed for superior precision, heavy duty cutting and reliability. The heavily-ribbed and innovative bed design provides unsurpassed rigidity and, as a result, delivers exceptional accuracies and repeatability's and superior surface finishes.

Travel distance (X/Z axis)

268/488 mm
(10.55/19.21 inch)

Rapid traverse (X/Z axis)

20/24 m/min
(787.4/944.9 inch)



PUMA V400P

The PUMA V400P vertical turning center is a productivity powerhouse with Roller-type LM guides, impressive rapid rates and fast acceleration/deceleration.

Power of axis motor (X/Z axis)

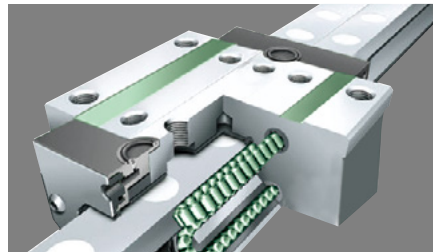
3/7 kW (4.0/9.4 Hp)

Rapid traverse (X/Z axis)

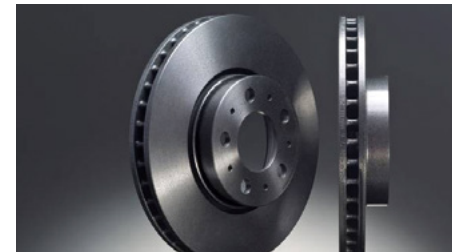
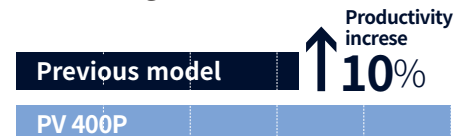
24/24 m/min (944.9/944.9 ipm)

Roller type LM guideways

Roller type LM guideways and upgraded servo motors along with a Meehanite cast iron bed with rigid heavy-rib structure, deliver outstanding productivity.



Machining time for brake disc



* Internal test result

MACHINING AREA

Wide machining area for larger/more diverse workpieces.

(A) Max. turning diameter

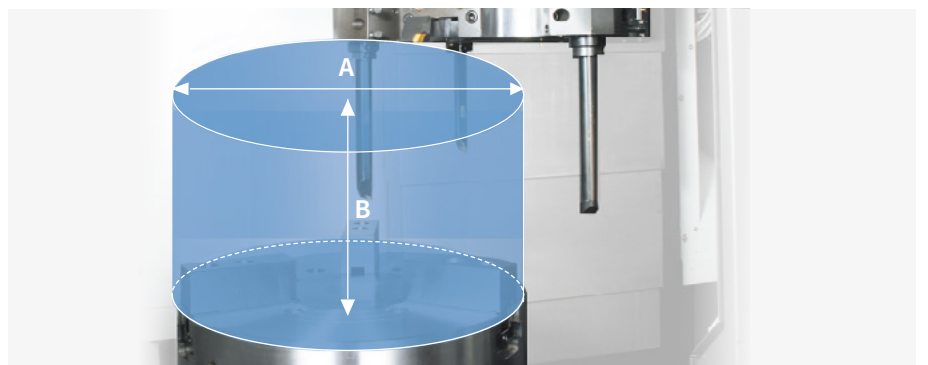
PUMA V400(P) / M

Ø496/420 mm
(19.53/16.54 inch)

(B) Max. turning length

PUMA V400(P) / M

461/400 mm
(18.15/15.75 inch)



SPINDLE

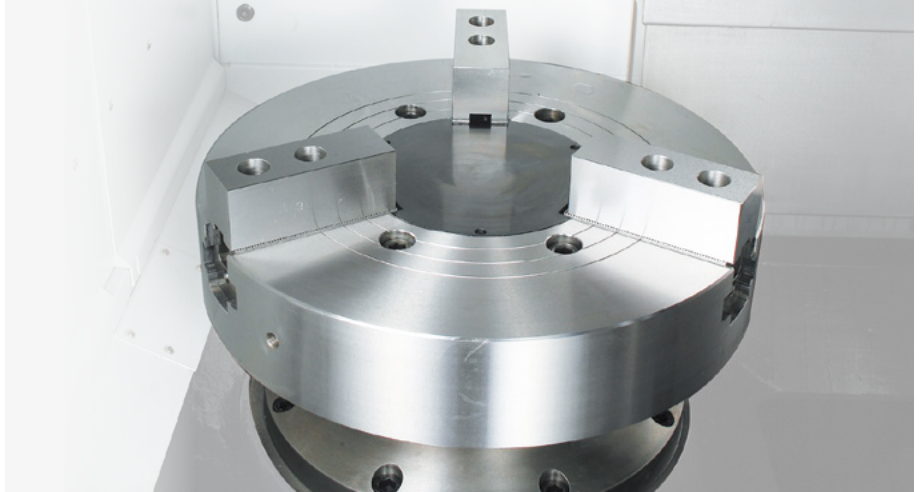
High reliability and rigidity with an improved base and spindle motor assembly. The cartridge type spindle with A2#8 spindle nose is highly capable and is easy to maintain. The extremely rigid coupled bearing assembly supports heavy workpieces and helps reduce thermal growth over long machining runs and extended operation.

Max. spindle speed

3000 r/min

Max. spindle power (S6 25%)

26 kW (34.9 Hp)



TURRET

The servo turret facilitates faster indexing and accurate positioning.

The large 12 station heavy duty turret features a large diameter Curvic coupling and has a heavy duty design with unsurpassed rigidity. Turret rotation, acceleration and deceleration etc., are all controlled by a reliable high-torque servo motor. Unclamping and rotation are virtually simultaneous. The machine's fast indexing response reduces the total part cycle times.

Index time (11-station swivel)

0.15 s

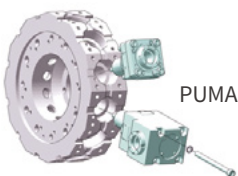
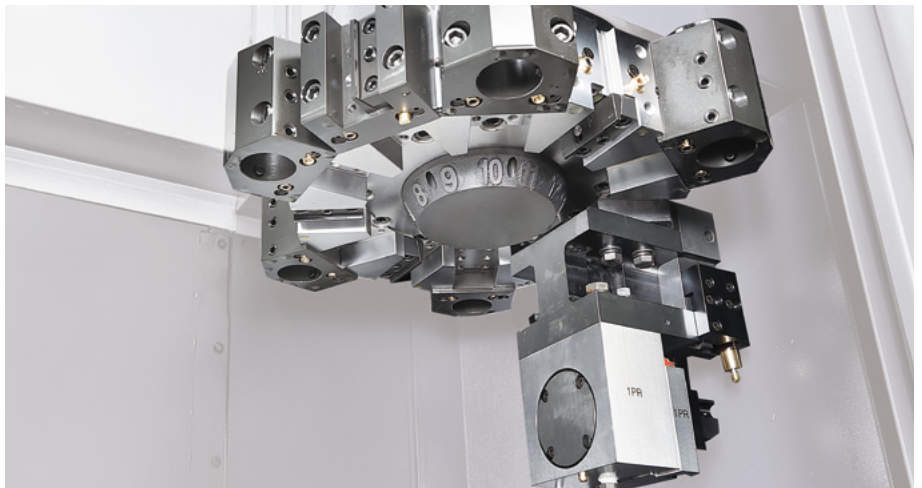
No. of tool station

PUMA V400/M/P

12 ea

PUMA V400

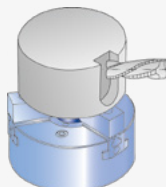
8 ea OPTION



PUMA V400M : BMT65P

Rotary tool head

The rotary tool head ensures high rigidity and accuracy by simultaneously facilitating dual contact between the rotary tool head face and the tool holding insert (called Preci-flex adapter) flange face as well as its the tool head pocket taper.



Collet application



Preci-flex adapter application



STANDARD | OPTIONAL SPECIFICATIONS

A range of options is available to suit individual requirements.

Description	Features	PUMA V400 series
Chuck (LEFT / RIGHT)	305 mm (12 inch)	●
	380 mm (15 inch)	○
	Hydraulic chuck & actuating cylinder	●*1)
	None	○
Jaw (LEFT / RIGHT)	Soft Jaws	●
	Hardened & Ground Hard Jaws	○
Chucking option	Dual Pressure Chucking	○
	Chuck Clamp Confirmation	○
Coolant pump	1.5 bar	●
	4.5 / 7 / 10 / 14.5 bar	○
Coolant options	High Coolant Interface	○
	Oil Skimmer(Belt type)	○
	Water soluble Coolant Chiller**	○
	Coolant Pressure Switch	○
Chip Conveyor	Side chip conveyor(Left)_Hinged type	○
	Side chip conveyor(Left)_Magnetic scraper	○
	Rear chip conveyor_Hinged type	○
	Rear chip conveyor_Magnetic scraper	○
Chip processing options	Chip Bucket (220L / 300L)	○
	Flushing coolant	○
	Air blower	○
	Air Gun	○
	Coolant Gun	○
Automatic configuration	Auto door with safety edge	○
	Automatic side door	○
	Tool Setter	○
	Work & Tool Counter	○
Robot Interface	PMC I/O MODULE TYPE	○
	PROFIBUS-DP TYPE	○
Customized Special Option	Coolant Level Switch : Sensing Level - Low	○
	Quick Change Tooling(CAPTO)	○
	High Torque Spindle With Gear Box	○
	Straddle Tool_Servo Type	○
	Coolant Pump_4.0 kW_2.0 Mpa	○
	Automatic Top Door	○
	Automatic Side Door	○
	Flushing Coolant_Special Specification	○
	Raised Column_50 mm	○
	Chuck Type_4 Jaw_T-Slot	○
	Additional Hydraulic A/B Line	○
	Rotary Cylinder_For Air Limit Sensing	○
	Raised Level Plate_110 / 160 / 200 mm	○
	Rotary Type Window Wiper_Electrical	○


*Please contact your DN Solutions representative for detailed machine information.

* When using a semi-synthetic type or synthetic type, contact our sales representative or service center in advance.

** Technical consultation is mandatory for the chilling of non-water soluble coolant

1) In case of chuck specification change, it may be necessary to replace the chuck cylinder.

● Standard ○ Optional X N/A

 **Fire Safety Precautions** | There is a high risk of fire when using non-water-soluble cutting fluids, processing flammable materials, neglecting the controlled and careful use of coolants and modifying the machine without the consent of the manufacturer. Always check the SAFETY GUIDELINES carefully before using the machine.

DN SOLUTIONS FANUC i PLUS

DN Solutions Fanuc i Plus maximizes customer productivity and convenience.

15" Screen + New OP

DN Solutions Fanuc i Plus' operation panel enhances operating convenience by incorporating common-design buttons and layout. It features a Qwerty keyboard for fast and easy data input and operation.

DN Solutions Fanuc i Plus

- 15-inch color display
- Intuitive and user-friendly design

USB and PCMCIA card QWERTY keyboard

- EZ-Guide i standard
- Ergonomic operator panel
- 2MB Memory
- Hot keys



iHMI touchscreen OPTION

iHMI provides an intuitive interface that uses a touchscreen for quick and easy operation.

Range of applications

Providing various applications related to planning, machining, improvement and utility, for customer convenience.



NUMERIC CONTROL SPECIFICATIONS

FANUC

Division	Item	Specifications	PUMA V400 / P	PUMA V400M
			DN Solutions Fanuc i Plus	DN Solutions Fanuc i Plus
Controlled axis	Controlled paths		1 Path	1 Path
	Controlled axes		2 (X,Z)	3 (X,Z,C)
	Simultaneously controlled axes		2 axes	3 axes
Data input/output	Fast data server		○	○
	Memory card input/output		●	●
	USB memory input/output		●	●
	Larger capacity memory_2GB	Note *2) Available Option only with 15" Touch LCD (iHMI Only)	○ *2)	○ *2)
Interface function	Embedded Ethernet		●	●
	Fast Ethernet		○	○
	Enhanced Embedded Ethernet function		●	●
Operation	DNC operation	Included in RS232C interface.	●	●
	DNC operation with memory card		●	●
Program input	Workpiece coordinate system	G52 - G59	●	●
Feed function	AI contour control I	G5.1 Q_, 40 Blocks	●	●
	AI contour control II	G5.1 Q_, 200 Blocks	○	○
Operation Guidance Function	EZ Guidei (Conversational Programming Solution)		●	●
	iHMI with Machining Cycle	Note *1) Only with 15" Touch LCD standard	○ *1)	○ *1)
	Multi path function	Supporting 2 or 3 path machine	●	●
	EZ WORK		●	●
Setting and display	CNC screen dual display function		●	●
Network	FANUC MTConnect		*	*
	FANUC OPC UA		*	*
Others	Display unit	15" color LCD	●	●
		15" color LCD with Touch Panel	○	○
	Part program storage size & Number of registerable programs	5120M(2MB)_1000 programs	●	●

CONVENIENT OPERATION

Siemens S828D

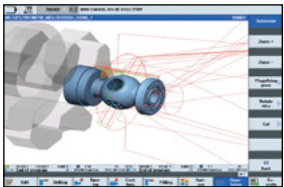


15.6 inch display + New OP

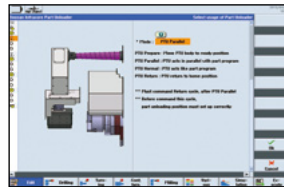
Siemens 828D' operation panel enhances operating convenience by incorporating common-design buttons and layout. It features a Qwerty keyboard for fast and easy data input and operation.

- 15.6 inch display
- USB (standard)
- QWERTY keyboard

Convenient conversational functionality

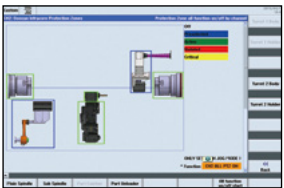


Cutting and operation support function
This function shows a cutting and tool path simulation in real-time.



Shop-turn mode
[various]
↓
[attachments]

The automation elements (parts catcher, parts unloader etc.), can be easily controlled via interactive screens.



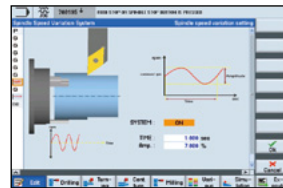
[Custom]
↓
[Protection zones]

Operation safety function
Protection Zone Synchronized Actions checks the interference between the turret and the spindle to prevent collisions caused by operator error.



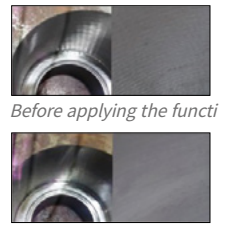
[offset]
↓
[operating parameter]
↓
[TC service]

Maintenance and service convenience function
Maintenance and service of major equipment and peripheral devices, including the timer and parts counter settings can be easily undertaken.



[various]
↓
[attachment]
↓
[DSSV]

Machining accuracy improvement
The NC controls spindle speed at an optimal level for precision threading and turning, making it possible to automatically improve surface roughness.



Before applying the function
After applying the function

NUMERIC CONTROL SPECIFICATIONS

SIEMENS

Division	Item	Specifications	2-Axis	M
			S828D	S828D
Controlled axis	Controlled axes		X,Z,SP	X,Z,C,R
	Simultaneously controlled axes		4 axes	4 axes
Data input/output	Memory card input/output		X	X
	USB memory input/output		●	●
Interface function	Ethernet	(X130)	○	○
	On network drive	(without EES option, Extcall)	●	●
Operation	On USB storage medium, e.g. memory stick	(without EES option, Extcall)	●	●
	Workpiece coordinate system	G54 - G59, G507 - G599	●	●
Feed function	Advanced surface		X	X
	Top surface		X	X
	Look ahead number of block		1	1
Programming & Editing function	3D simulation, finished part		●	●
	Simultaneous recording		●	●
Operation Guidance Function	DXF Reader for PC integrated in SINUMERIK Operate		○	○
	Shopturn		●	●
Setting and display	EZ Operation package		●	●
	Operation via a VNC viewer		●	●
Network	MTCConnect		●	●
	OPCUA		⊗	⊗
Others	Display unit	Display unit	○	○
		CNC user memory 5MB	●	●
		CNC user memory 100 MB	○	○
		CNC user memory 6GB	X	X
		CNC user memory 40GB (with PCU or IPC)	X	X
		CNC user memory without limit (Execution from external storage devices) (EES / Using by USB or Network)	○	○
		HMI user memory for CNC part program 6GB	X	X

POWER | TORQUE

FANUC

PUMA V400 / M / P

Max. spindle speed

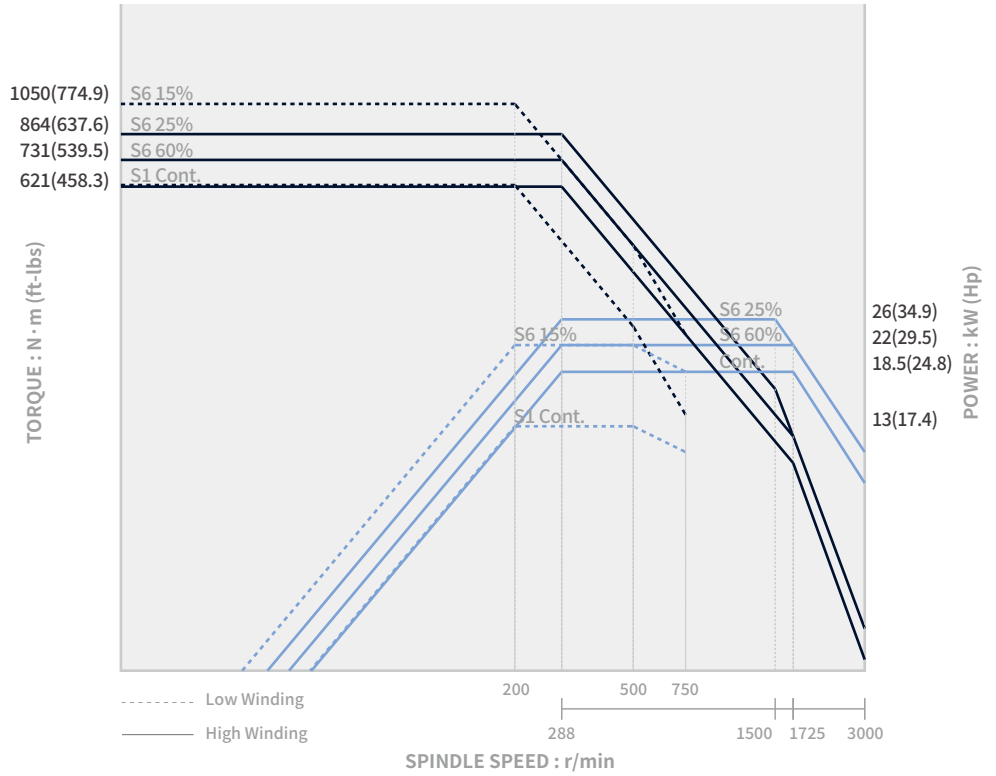
3000 r/min

Max. spindle power

26 kW (34.9 Hp)

Max. Spindle torque

1050 N·m (774.9 ft-lbs)



Rotary tool PUMA V400M BMT65P rotary spindle

Max. spindle speed

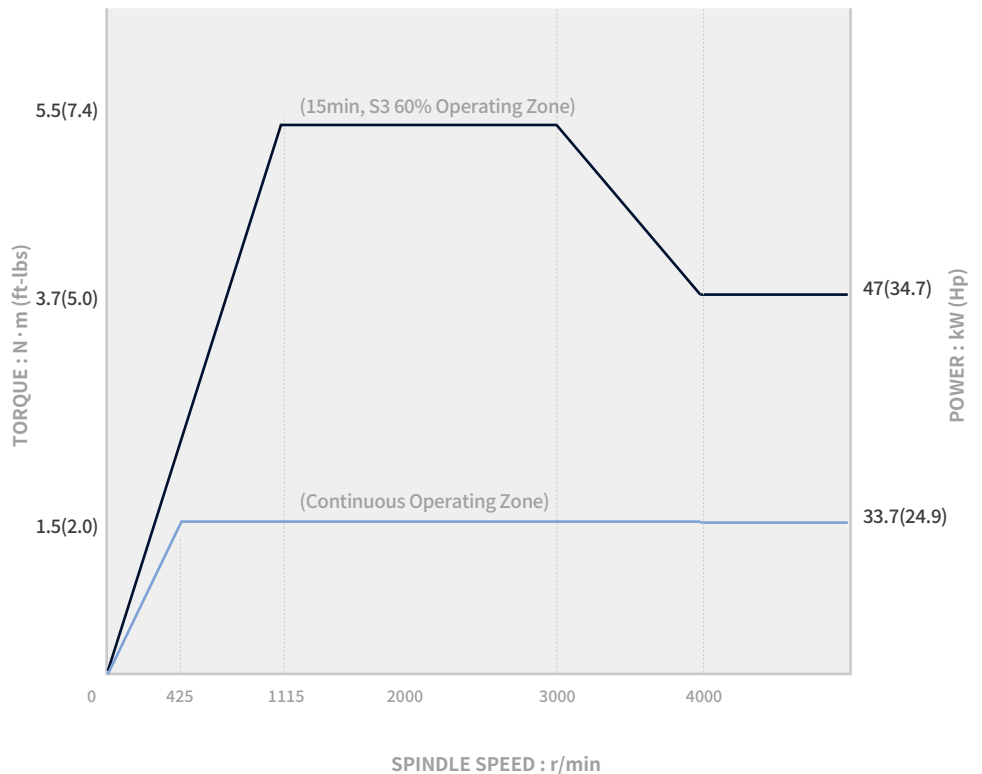
4000 r/min

Max. spindle power

5.5 kW (7.4 Hp)

Max. Spindle torque

47 N·m (34.7 ft-lbs)

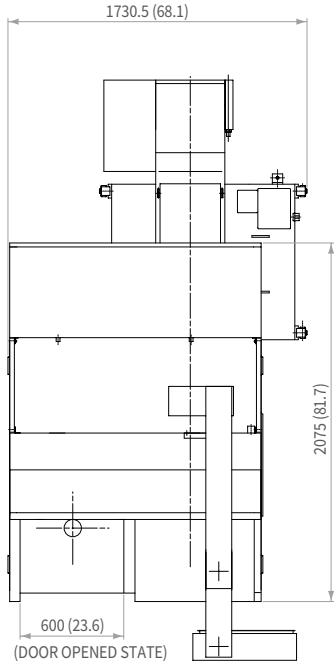


EXTERNAL DIMENSIONS

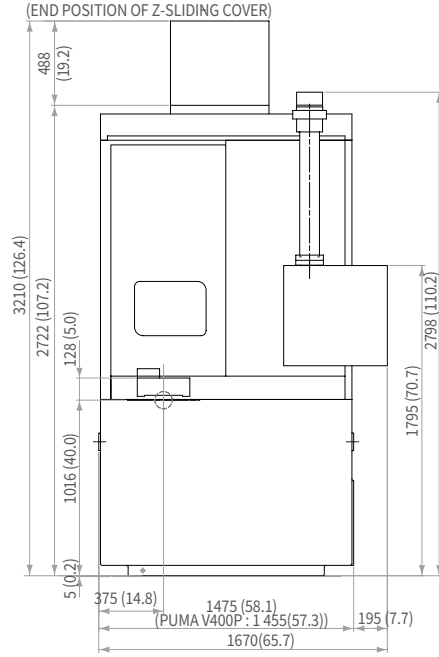
PUMA V400/M/P

Unit : mm (inch)

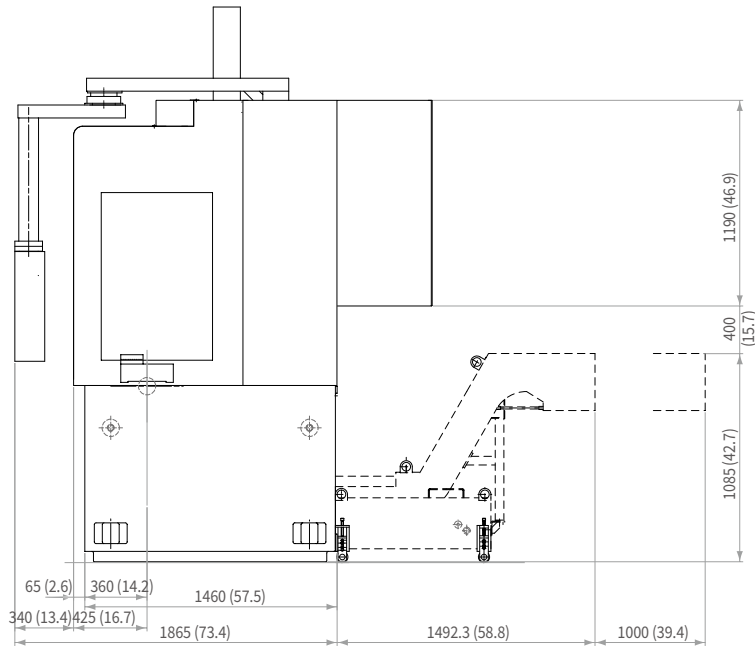
TOP



FRONT



SIDE

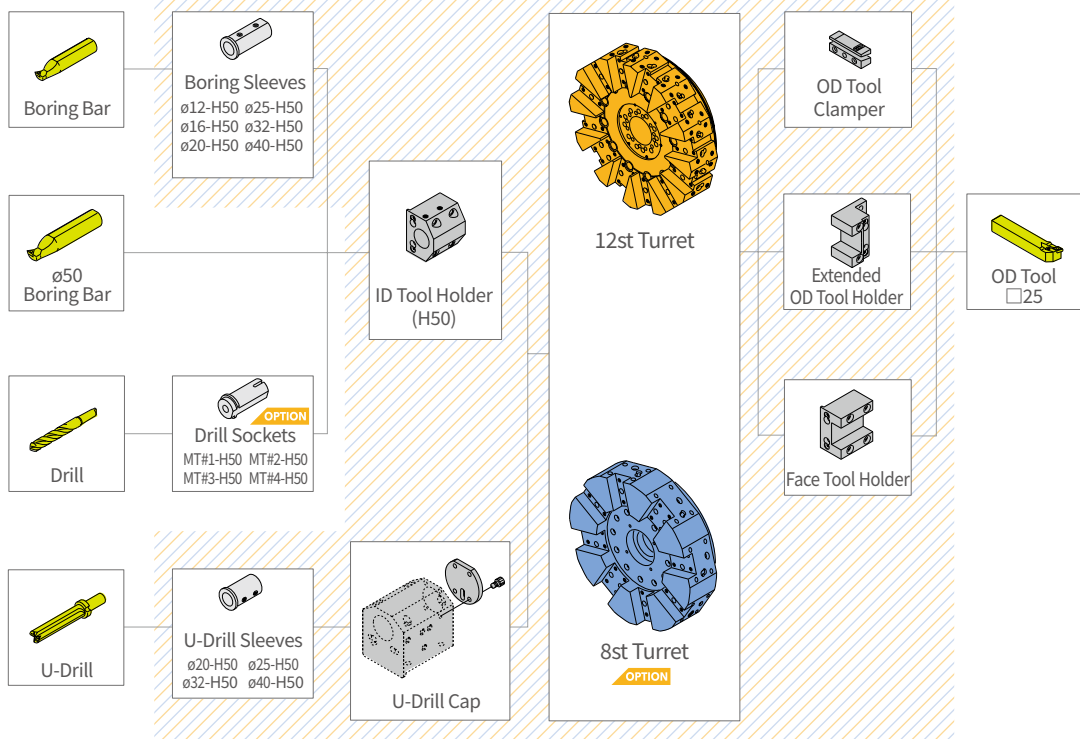


TOOLING SYSTEM

PUMA V400 / P

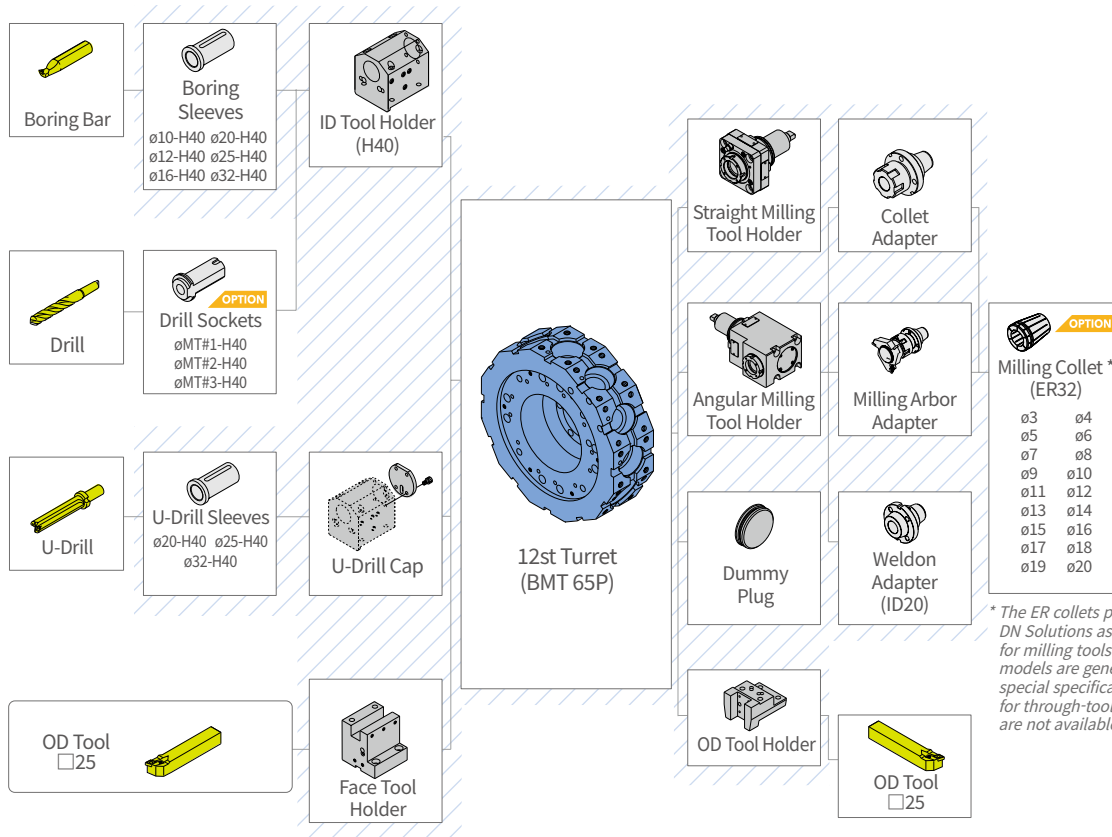
Unit : mm (inch)

Standard



PUMA V400M

Standard



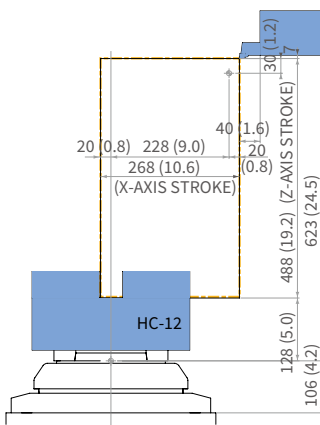
* The ER collets provided by DN Solutions as standard or optional for milling tools on turning center models are general type only, and special specification collets (such as for through-tool coolant or tapping) are not available.

WORKING RANGE

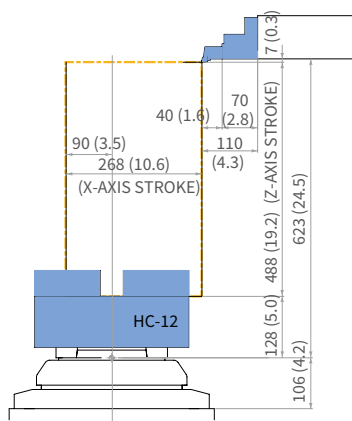
PUMA V400 / P

Unit : mm (inch)

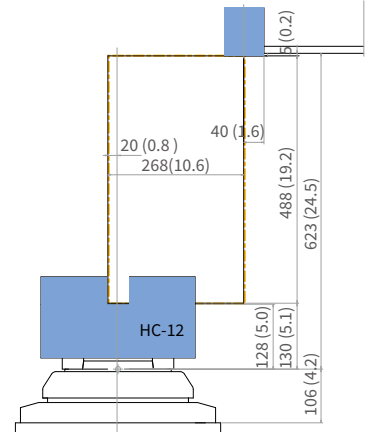
OD TOOL HOLDER



EXTENDED OD TOOL HOLDER

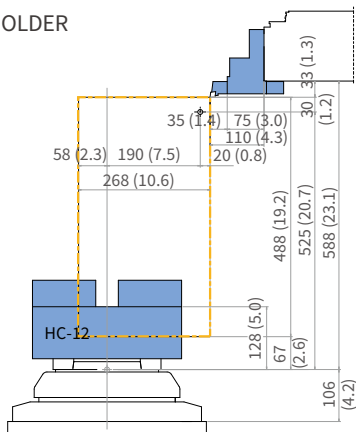


ID TOOL HOLDER

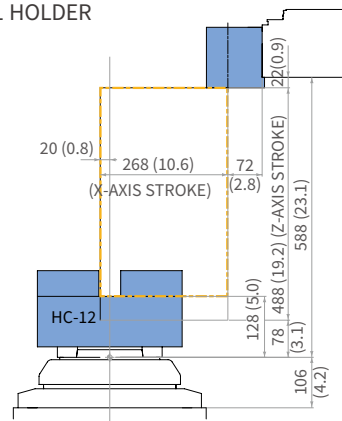


PUMA V400M

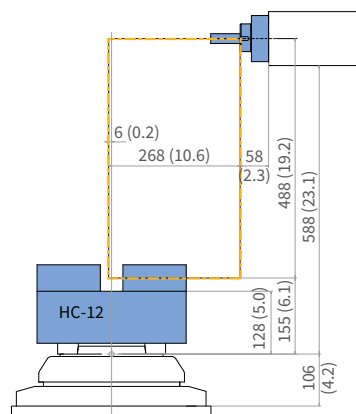
OD TOOL HOLDER



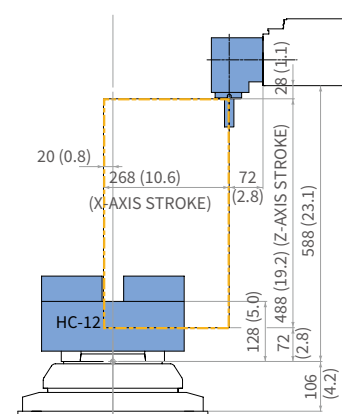
ID TOOL HOLDER



STRAIGHT MILLING TOOL HOLDER



ANGULAR MILLING TOOL HOLDER



MACHINE SPECIFICATIONS

PUMA V400 series

Description		Unit	PUMA V400/L/R	PUMA V400ML/MR	PUMA V400PL/PR
Capacity	Swing over bed	mm (inch)	610 (24.0)		
	Swing over saddle	mm (inch)	500 (19.7)		
	Recom. turning diameter	mm (inch)	305 (12.0)		
	Max. turning diameter	mm (inch)	496 (19.5)	420 (16.5)	496 (19.5)
	Max. turning length	mm (inch)	461 (18.1)	400 (15.7)	461 (18.1)
	Chuck size	inch	12		
Travels	Travel distance	X-axis	268(10.6)		
		Z-axis	488 (19.2)		
		C-axis	-	360	-
Feedrates	Rapid traverse	X-axis	20 (787.4)	20 (787.4)	24 (944.9)
		Z-axis	24 (944.9)	24 (944.9)	24 (944.9)
		C-axis	-	50	-
Spindle	Max. Spindle speed	r/min	3000		
	Max. spindle power (S6 25% / S6 60% / S1 cont.)	kW (Hp)	26/22/18.5 (34.9/29.5/24.8)		
	Max. spindle torque	N·m (ft·lbs)	863 (636.9)		
	Spindle nose	ASA	A2-8		
	Spindle bearing diameter (Front)	mm (inch)	130 (5.1)		
	Main spindle indexing angle (C-axis)	deg	-	0.001	-
Turret	No. of tool stations	ea	12{8}	12	12
	OD tool size	mm (inch)	25 x 25 (1.0 X 1.0)		
	Turret Indexing time(1st swivel)	sec	0.15		
	Rotary tool spindle speed	r/min	-	4000	-
	Rotary tool spindle motor	kW (Hp)	-	3.7/2.2 (5.0/3.0)	-
Power Source	Electric power supply (rated capacity)	kVA	43.16		
Machine dimensions	Length x Width	mm (inch)	1475 x 2075 (58.1 X 81.7)		
	Height	mm (inch)	3210 (126.4)		
	Weight	kg (lb)	6000 (13227.5)		
Control	NC system		DN Solutions Fanuc i Plus		

*{ } : option

RESPONDING TO CUSTOMERS **ANYTIME, ANYWHERE**

DN SOLUTIONS GLOBAL NETWORK

66 COUNTRIES | **140** + SALES NETWORKS | **3** FACTORIES | **6** REGIONAL HQS



CUSTOMER SUPPORT AND SERVICES

WE'RE THERE FOR YOU WHENEVER YOU NEED US.

We help our customers operate at maximum efficiency by providing them with a range of tried, tested and trusted services - from pre-sales consultancy to post-sales support.



FIELD SERVICES

- On-site service
- Machine installation and testing
- Scheduled preventive maintenance
- Machine repair service



PARTS SUPPLY

- Supplying a wide range of original DN Solutions spare parts
- Parts repair service



TRAINING

- Programming, machine setup and operation
- Electrical and mechanical maintenance
- Applications engineering



TECHNICAL SUPPORT

- Supports machining methods and technology
- Responds to technical queries
- Provides technical consultancy

**Head Office**

19F, 10, Tongil-ro, Jung-gu, Seoul,
Republic of Korea, 04527

Tel: +82-2-6972-0370
Fax: +82-2-6972-0400

DN Solutions America

360 E State PKWY,
Schaumburg, IL. 60173,
United states

Tel: +1-315-265-7500

DN Solutions Europe

Emdener Strasse 24, D-41540
Dormagen, Germany

Tel: +49-2133-5067-100
Fax: +49-2133-5067-111

DN Solutions India

No.82, Jakkur Village
Yelahanka Hobli,
Bangalore-560064

Tel: +91-80-2205-6900
E-mail: india@dncompany.com

DN Solutions China

Room 101,201,301,
Building 39 Xinzhuan Highway
No.258 Songjiang District
China Shanghai (201612)

Tel: +86 21-5445-1155
Fax: +86 21-6405-1472

DN Solutions Vietnam

M.O.R.E building 2F, 40A-40B Ut
Tich Street, 04 Ward 04,
District Tan Binh District,
Ho Chi Minh City, Vietnam

Tel: +84 28-7304-0163

DN Solutions Mexico

Avenida Parque Bicentenario
#100 Nave M65L3-6,
Fraccionamiento San Isidro
Business Park,
Santa Rosa Jauregui,
Querétaro, México

E-mail: efrain.figueroa@dncompany.com

Sales inquiry

sales@dncompany.com